

SCOPIA Connector for IBM Lotus Sametime Web Conferencing

version 5.7



*Installation and Administration
Guide*



EXPERIENCE TO TAKE PLACE OUR PRODUCT
COMMUNICATIONS EXPERIENCE TO TAKE PLACE
ENABLE A RICHER COMMUNICATIONS EXPER
PRODUCTS ENABLE A RICHER COMMUNICATIO
CEOUR PRODUCTS ENABLE A RICHER COMMUN
TAKE PLACEOUR PRODUCTS ENABLE A RICHER COMMUN

NOTICE

© 2008 RADVISION Ltd. All intellectual property rights in this publication are owned by RADVISION Ltd and are protected by United States copyright laws, other applicable copyright laws and international treaty provisions. RADVISION Ltd retains all rights not expressly granted.

This publication is RADVISION confidential. No part of this publication may be reproduced in any form whatsoever or used to make any derivative work without prior written approval by RADVISION Ltd.

No representation of warranties for fitness for any purpose other than what is specifically mentioned in this guide is made either by RADVISION Ltd or its agents.

RADVISION Ltd reserves the right to revise this publication and make changes without obligation to notify any person of such revisions or changes. RADVISION Ltd may make improvements or changes in the product(s) and/or the program(s) described in this documentation at any time.

If there is any software on removable media described in this publication, it is furnished under a license agreement included with the product as a separate document. If you are unable to locate a copy, please contact RADVISION Ltd and a copy will be provided to you.

Unless otherwise indicated, RADVISION registered trademarks are registered in the United States and other territories. All registered trademarks recognized.

Beta

For further information contact RADVISION or your local distributor or reseller.

SCOPIA Connector for IBM Lotus Sametime Web Conferencing version 5.7, December 2008

Publication 1

<http://www.radvision.com>

CONTENTS

About This Manual

| | |
|-----------------------|---|
| Related Documentation | v |
| Feedback | v |

1 *About Deployment of SCOPIA Connector for IBM Lotus Sametime Web Conferencing*

| | |
|--|---|
| About Simple Sametime Deployments | 2 |
| About Multiple Sametime Community Hubs Deployments | 3 |

2 *Integrating SCOPIA Connector into the Sametime Deployment*

| | |
|--|---|
| Installing the Sametime Connector on the SCOPIA Desktop Server | 5 |
| Preparing the Sametime Servers | 6 |
| Enabling Community Services Connectivity | 6 |
| Installing the Meeting Room Client Javascript Extension | 6 |
| Configuring the Sametime Settings on the SCOPIA Desktop Server | 7 |

ABOUT THIS MANUAL

The [SCOPIA Connector for IBM Lotus Sametime Web Conferencing Installation and Administration Guide](#) provides information for administrators and end users about SCOPIA Connector configuration and conference creation in the IBM Lotus Sametime environment.

Note The SCOPIA Connector plug-in works with the following IBM product versions:

- Sametime 7.5.1 and 8.0.1
- Lotus Notes 8.0

This manual refers to options available in Sametime 8.0.

Configuration options may vary according to the product version you are using.

RELATED DOCUMENTATION

The SCOPIA Connector documentation set is available in PDF format and as online help.

You require Adobe Acrobat Reader version 5.0 or later to open the PDF files. You can download Acrobat Reader free of charge from www.adobe.com.

FEEDBACK

The team at RADVISION constantly endeavors to provide accurate and informative documentation. If you have comments or suggestions regarding improvements to future publications, we would value your feedback.

Please send your comments to doc_comments@radvision.com.

We thank you for your contribution.

1

ABOUT DEPLOYMENT OF SCOPIA CONNECTOR FOR IBM LOTUS SAMETIME WEB CONFERENCING

Integrating SCOPIA Desktop with IBM Lotus Sametime allows adding real-time multipoint video and audio to the Sametime Web meetings. To allow this, a SCOPIA Desktop Server is associated with an IBM Lotus Sametime Community deployment.

Two modules are used for the integration:

- Sametime Connector, a Sametime Community Server application that runs as part of the SCOPIA Desktop Middleware
- Sametime Meeting Room Client Javascript extension that is used to realize the user interface inside the Sametime Meeting Room Client

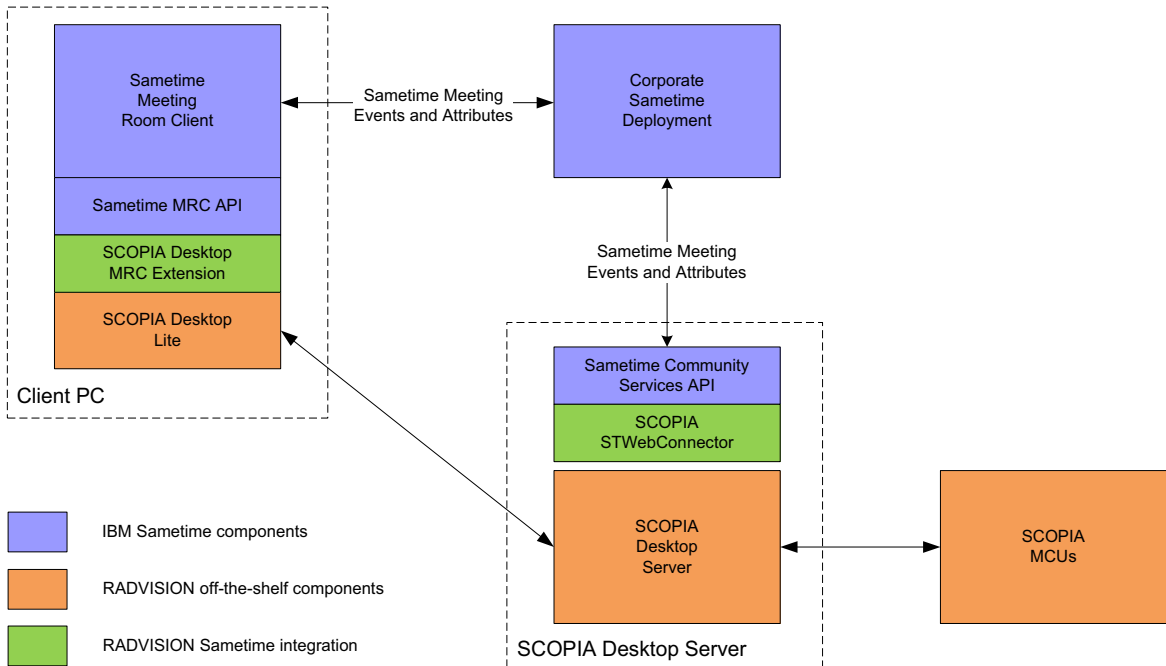
Sametime Connector detects the start of a Sametime meeting and attaches meeting attributes along with an ID of SCOPIA Desktop ad-hoc meeting which is generated at that time. The Javascript extension is loaded with the Meeting Room Client when a user joins a Sametime meeting and pulls the video meeting information from the meeting so that all attendees transparently join the same video meeting.

- [About Simple Sametime Deployments](#) on page 2
- [About Multiple Sametime Community Hubs Deployments](#) on page 3

ABOUT SIMPLE SAMETIME DEPLOYMENTS

In a simple Sametime Deployment, one SCOPIA Desktop Server is associated with a Sametime Server or a Community hub. In this case all users use the same Sametime Server for their meeting services, as shown in [Figure 1-1](#).

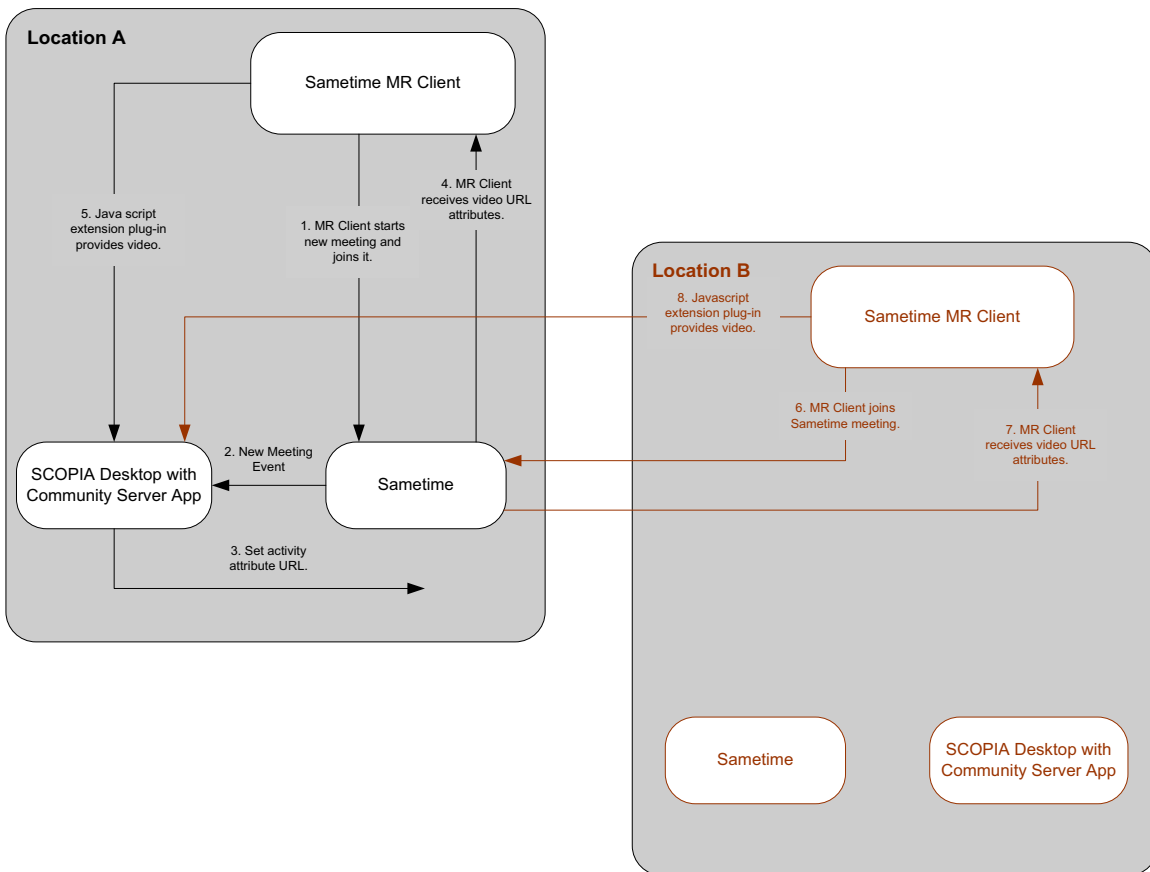
Figure 1-1 Simple Sametime Deployment



ABOUT MULTIPLE SAMETIME COMMUNITY HUBS DEPLOYMENTS

In deployments described in this section, there may be multiple community hubs. Users schedule meetings through their home Sametime Server and may invite users from the same home server as well as users from other Community Server clusters. The meetings may be hosted on the home Sametime Server of the meeting creator as shown on [Figure 1-2](#). In this case, meeting attributes do not need to be propagated to the other server.

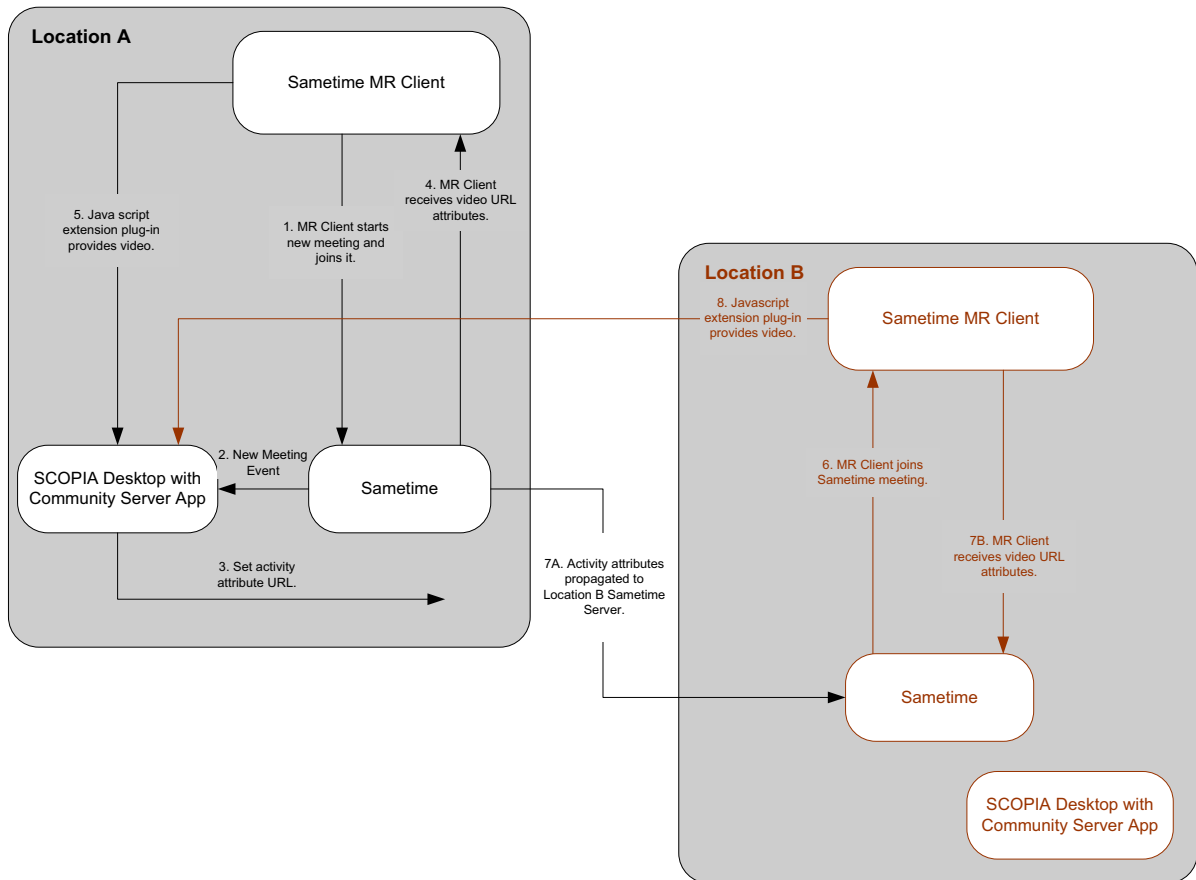
Figure 1-2 Multiple Sametime Community Hub Deployment for non-propagated meetings



About Multiple Sametime Community Hubs Deployments

Alternatively, meetings may be hosted on different Sametime Servers. In this case, the meeting information and attributes are propagated from the home Sametime Server to the other server as shown on [Figure 1-3](#) on page 4.

Figure 1-3 Multiple Sametime Community Hub Deployment for propagated meetings



2

INTEGRATING SCOPIA CONNECTOR INTO THE SAMETIME DEPLOYMENT

- [Installing the Sametime Connector on the SCOPIA Desktop Server on page 5](#)
- [Preparing the Sametime Servers on page 6](#)
- [Configuring the Sametime Settings on the SCOPIA Desktop Server on page 7](#)

INSTALLING THE SAMETIME CONNECTOR ON THE SCOPIA DESKTOP SERVER



Procedure

- 1 Copy the installation files to a folder on the SCOPIA Desktop Server.
- 2 Double-click the *install.vbs* file.

- 3 In the confirmation message, click **OK**.
When the installation is completed, a message is displayed explaining that the Sametime Connector is installed and the log file is created.
-

PREPARING THE SAMETIME SERVERS

- [Enabling Community Services Connectivity](#) on page 6
- [Installing the Meeting Room Client Javascript Extension](#) on page 6

ENABLING COMMUNITY SERVICES CONNECTIVITY

To prepare the Sametime server for the SCOPIA Connector for IBM Lotus Sametime Web Conferencing, you must edit the Sametime configuration using the IBM Domino Administrator Application to allow the IP address of the SCOPIA Desktop Server to connect to Community Services. Perform this procedure on every Sametime server which has a SCOPIA Desktop Server associated with it.



Procedure

- 1 Open the IBM Domino Administrator application.
 - 2 Click the **Domain** tab.
 - 3 Click the **Files** tab.
 - 4 Navigate to this location: *\Program Files\IBM\Lotus\Domino\Data*.
 - 5 Double-click the Sametime Configuration file.
 - 6 In the left pane, click **By Form**.
 - 7 Right-click the **CommunityConnectivity** and select **Edit**.
The form opens.
 - 8 In the Community Trusted IPS field, enter the IP address of the SCOPIA Desktop Server.
 - 9 Click **File > Save**.
-

INSTALLING THE MEETING ROOM CLIENT JAVASCRIPT EXTENSION

In order to enable the video integration, you need to copy a file placed on the SCOPIA Desktop Server during the SCOPIA Connector installation to the Sametime server.



Procedure

- 1 On the SCOPIA Desktop Server, navigate to this location:
Program Files\Radvision\SCOPIA Desktop\SametimeWeb
 - 2 Copy the *SDMrcExtension.js* file.
 - 3 On the Sametime server, navigate to this location:
\Program Files\Lotus\Domino\data\domino\html\sametime\jsex
 - 4 Paste the copied file into this location.
-

CONFIGURING THE SAMETIME SETTINGS ON THE SCOPIA DESKTOP SERVER

You need to configure the SCOPIA Desktop Server to work with the Sametime Server.

Before You Begin

- Access the SCOPIA Desktop Administration web user interface.
- Verify the Sametime Server address.
- Verify which port on the Sametime Server you need to assign to the SCOPIA Desktop Server.



Procedure

- 1 Click **Sametime** in the sidebar.
- 2 Enter the Sametime Server address.
- 3 Enter the port on the Sametime Server.
The default port is 1516.
- 4 Enter the meeting prefix for the SCOPIA Desktop Server to use for the Sametime meetings.
- 5 If necessary, set the number of video panes displayed in the Conference Client pane when it is opened in the Sametime Meeting Room window:
 - a Choose the **Set the initial view that users will see when they join a Sametime meeting** check box.
 - b Choose one of these options:
 - ❖ **1 Video**
 - ❖ **2 Videos**

- 6 If necessary, choose the **Enable Audio in SCOPIA Desktop for Sametime meetings** check box.
- 7 If necessary, choose the **Allow only the Sametime Meeting Chair to add video to a meeting** check box. This allows a Sametime Meeting chair to control when the video pane is displayed in the user's meeting room client.

Note This feature is not available if the SCOPIA Connector is configured to work with the Sametime Server version 7.5.1.

- 8 If necessary, choose the **Allow only the Sametime Meeting Chair to moderate a meeting** check box. This determines whether only a Sametime Meeting chair has audio and video moderation functions enabled or if they are enabled for all participants in a SCOPIA Desktop meeting.
 - 9 Click **OK** or **Apply**.
 - 10 Verify that the connection to the Sametime Server is successful:
 - a Click **Status** in the sidebar.
 - b Click the link showing the IP address of the Sametime Server to display the settings.

The indicator next to the link shows whether or not the connection to the Sametime server is successful. When the indicator is red, a tooltip containing error details is available. Click the red indicator to view further error information.
-